

**VARG A**

**ELETRICAL**

Power	Volt	Freq.	Phase curr.	Neut. loaded	System earth	Short circuit level		Distribution protection		Connection platform	Connection temp. equip.	Area
						min [kA]	max [kA]	Fuse [A]	Earth fault [mA]			
*	[V]	[Hz]	[A]	Yes/No	[S//I/R]**					Desc./Type	Desc./Type	Modul No. /Room No.
Main	230	50	16	No	S			16	30	Socket: STAHL 8575/11 (blue) 6h 2P+PE	Plug: STAHL 8575/12 (blue) 6h 2P+PE	Weatherdeck: 3 stk Mezzdeck: 1stk Cellardck: 4 stk
UPS	230	50	16	No	S			16	30	Socket: STAHL 8575/11-306 (blue) 6h 2P+PE	Pug: STAHL 8575/12-306 (blue) 6h 2P+PE	Weatherdeck: 1stk
.Main	400	.50	.63	.No	.S	.	.	.63	.30	.Socket: STAHL 8579/11-406 (red) 6h 3P+PE	.Plug: STAHL 8579/12-406 (red) 6h 3P+PE	.Weatherdeck: 1 stk Mezzdeck: 1 stk Cellardck: 1stk
.Main	.400	.50	.125	.No	.S	.	.	.125	.30	.Socket: STAHL 8581/11-506 (red) 6h 3P+N+PE	.Plug: STAHL 8581/12-506 (red) 6h 3P+N+PE	.Weatherdeck: 2 stk

\*Main - Main Power  
Emg - Emergency Power  
Ess - Essential Power  
UPS - UPS Power

\*\*S = Solidly (direkte jordet)  
I = Isolated (isolert)  
R = Resistor (resistansjordet)

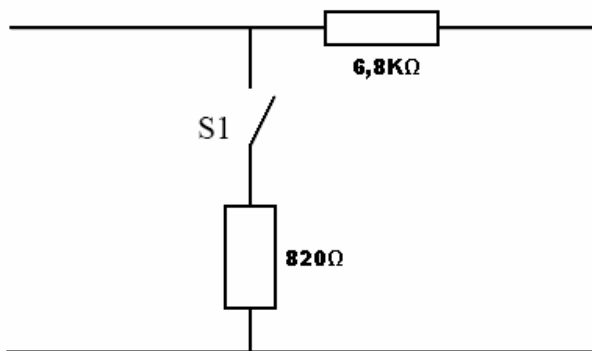
**VARG A**

**INSTRUMENT**

Function	Signal type	Connection platform	Connection temp. equip.	Area
		Desc./Type	Desc./Type	Modul No. /Room No.
Loss of pressure		NA		
Fire*		Termination in JB 70-10-80-INJ003		Weatherdeck
Gas*		Termination in JB 70-10-80-INJ003		Weatherdeck
Other		NA		

**\* Common alarm.**

Functional drawing for how alarm signal in container should be arranged.



S1= Common alarm from F&G equipment in temporary container.

**TELECOM**

Function	Signal type	Connection platform	Connection temp. equip.	Area
		Desc./Type	Desc./Type	Modul No. /Room No.
PA		Termination in JB 86-11-80-JE040		Weatherdeck
Telephone		Termination in JB 86-21-80-JE001		Weatherdeck

**VARG A**

**UTILITIES**

Function	Pressure	Amount/flow		Connection		Area
	[BAR]	Max capas.	Type	Diameter	Material	Modul No. /Room No.
Plant air	8	1,154 M3/min	Cicago Dixon			Weatherdeck, Mezzdeck, Cellardeck
Instr. air	NA					
Sprinkler	NA					
Seawater (Firewater)	12					Weatherdeck, Mezzdeck, Cellardeck
Freshwater	NA					
Drain	.					
Other	.					

**LIFTING CAPACITY OFFSHORE CRANES**

Crane	1 metre significant wavehight max. load / max. radius	2 metres significant wavehight max. load / max. radius	3 metres significant wavehight max. load / max. radius
1 FALL	.10t / 28,4m	8,3t / 28,4m	6,7t / 28,4m
2 FALL	.10t / 28,4m	.10t / 28,4m	.10t / 28,4m
.3 FALL	.10t / 28,2m	.10t / 28,2m	.10t / 28,2m